

Pedorthic Modifications



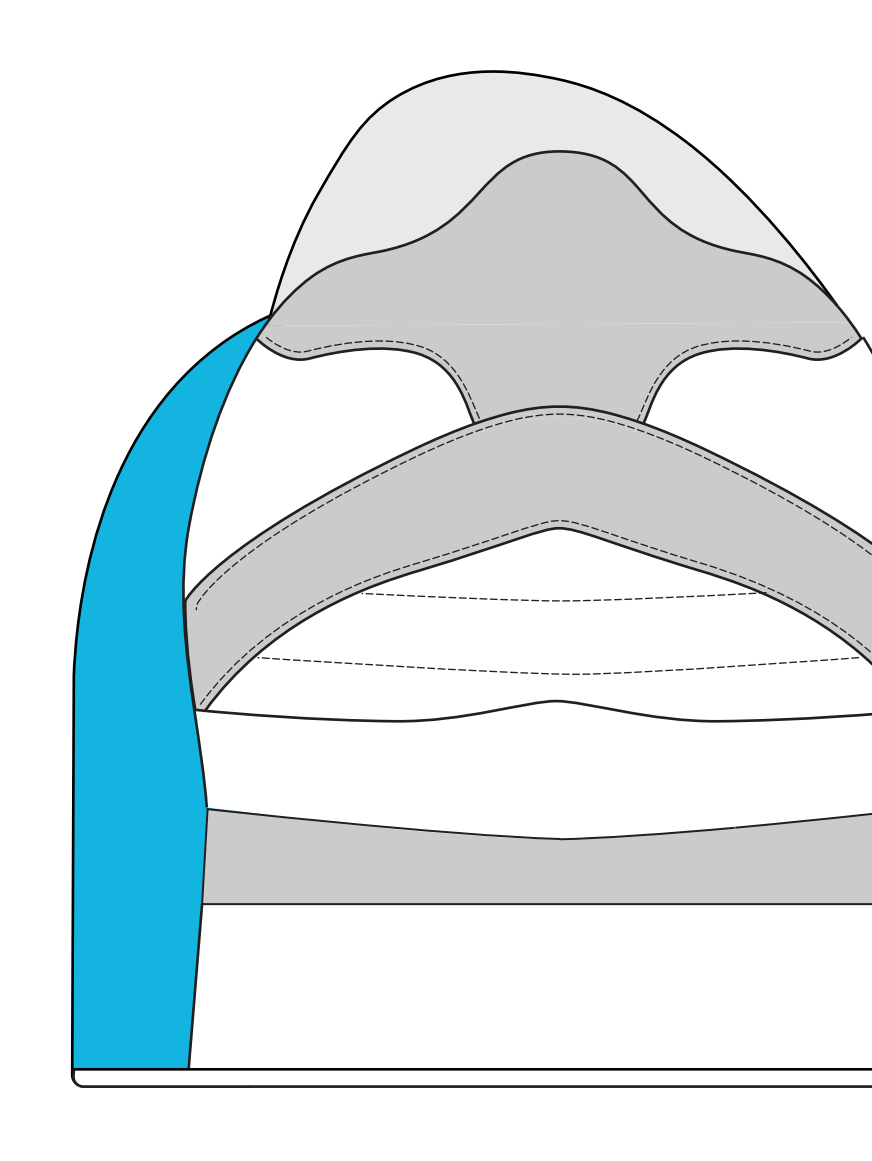
Heel and toe rocker sole

This rocker rolls at both the heel and toe while keeping a level mid-stance area for balance. It assists with energy transfer and delays heel strike causing a longer stride.



Buttress

Used to stabilize the ankle, can be either on the medial or lateral side. Supports the foot and widens the base of support to help control abnormal motion



Leg length DISCREPANCY buildup

Lifts the shoe for those with a difference in leg length, reduce strain on joints muscles and other structures. Generally height at the metatarsal heads is scaled to 2/3 of the heel height.



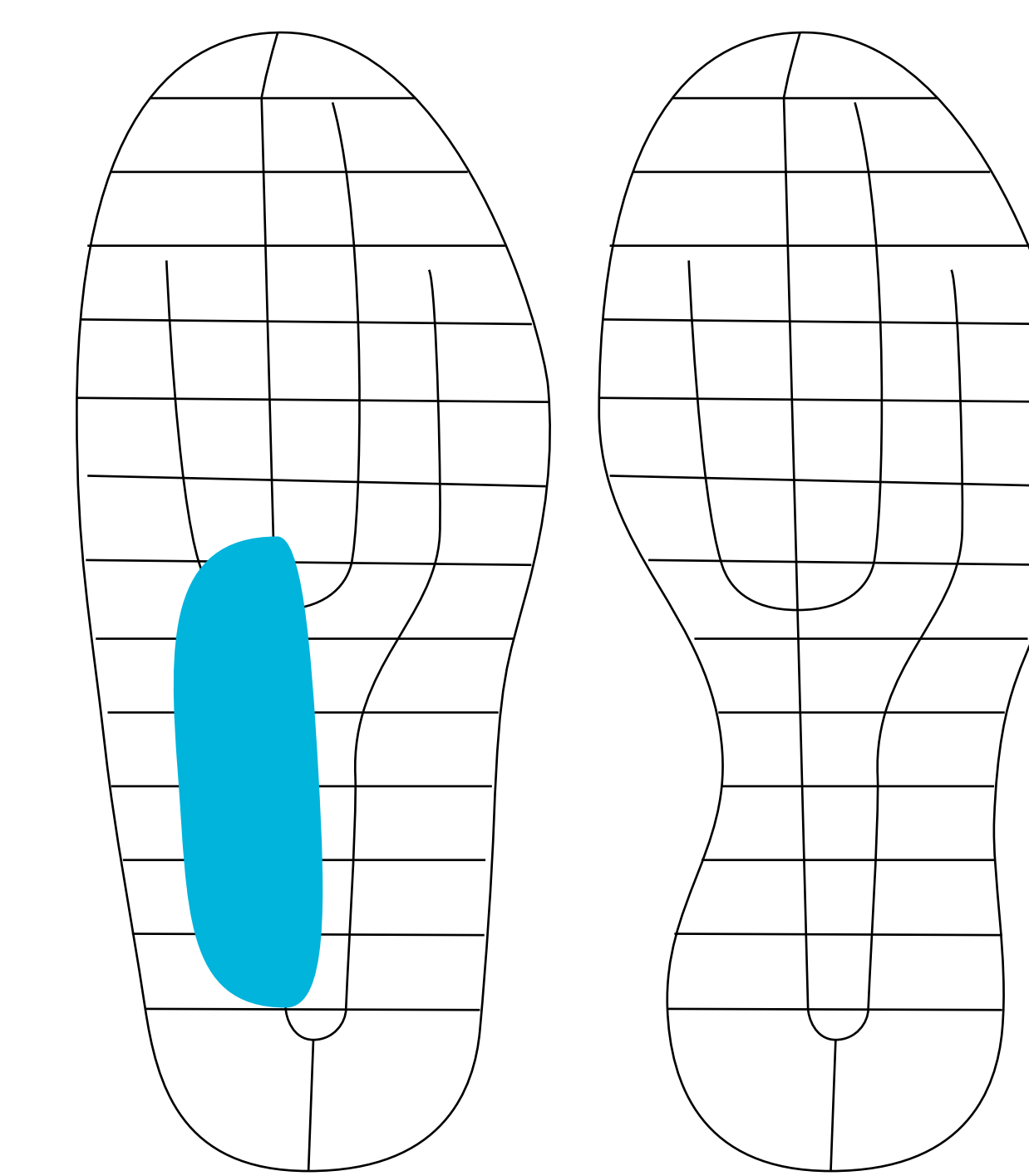
Forefoot rocker sole

Only rocks forward from the metatarsal heads forward to the toes. Assists with met offload during ambulation and forward propulsion and toe off.



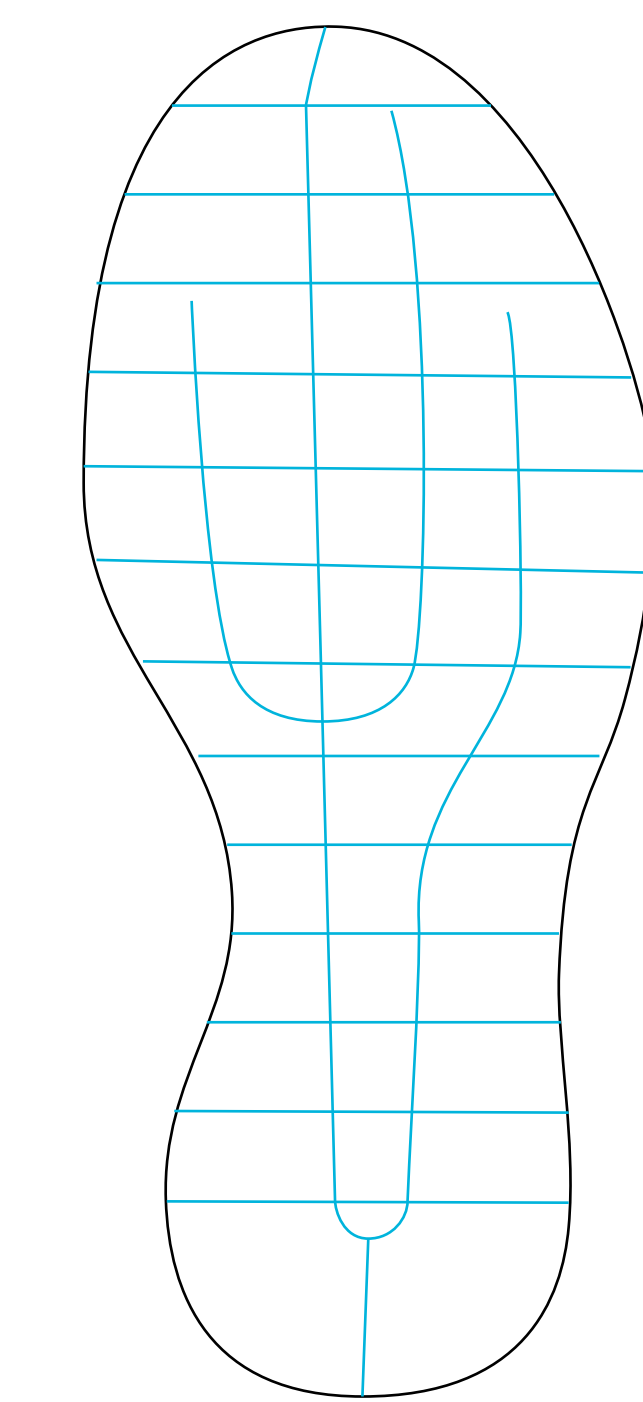
Heel Raise

Heel raises indicated for Equinus or Achilles tendonitis issues. Sometimes used for small LLDs. Increased pressure on the forefoot should be considered.



Widen mid-foot/Relasting

The width of footwear can be increased for those with a larger mid-foot shape. Shoes can be widened at the heel or mid foot. Shoe size and quality should be considered.



Carbon Fibre shank/Stiffener

Carbon plates can be applied to the shoe to reduce flexion/rotation in the foot. Used with a rocker sole to reduce strain on joints and assist in normalising gait.



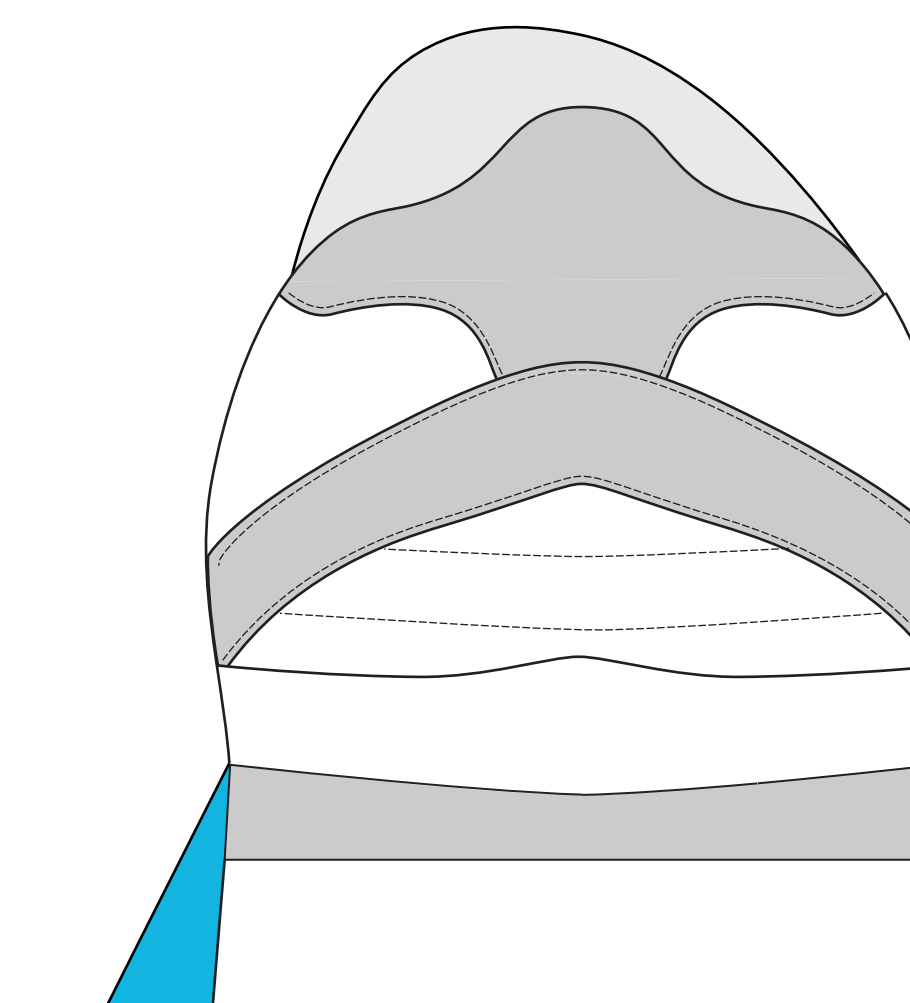
Full length rocker sole

Full rocker offers a continuous roll from heel to toe. Not suitable for those with balance issues.



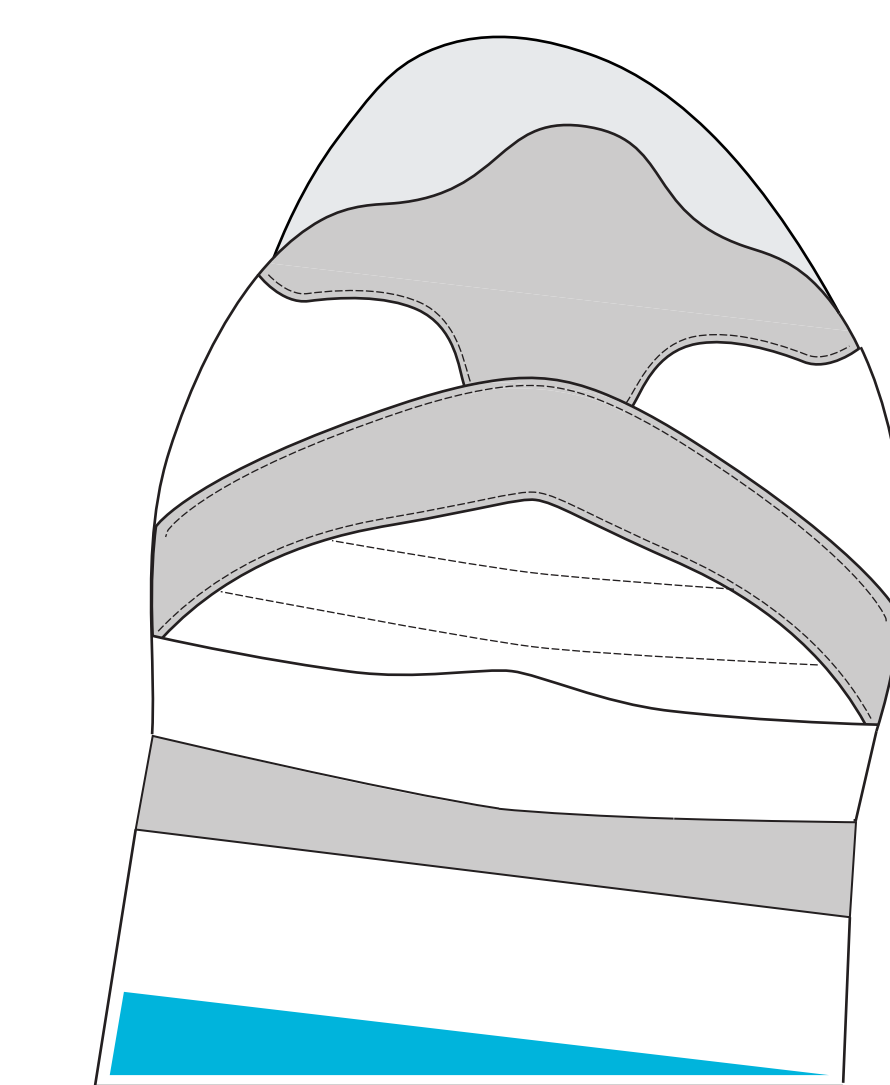
SACH

Solid Ankle Cushion Heel is used to reduce shock at heel strike as well as promoting pronation or supination of the subtalar joint with mobility.



Flare

Increases stability of the shoe and gently forces the foot away from the modified side.



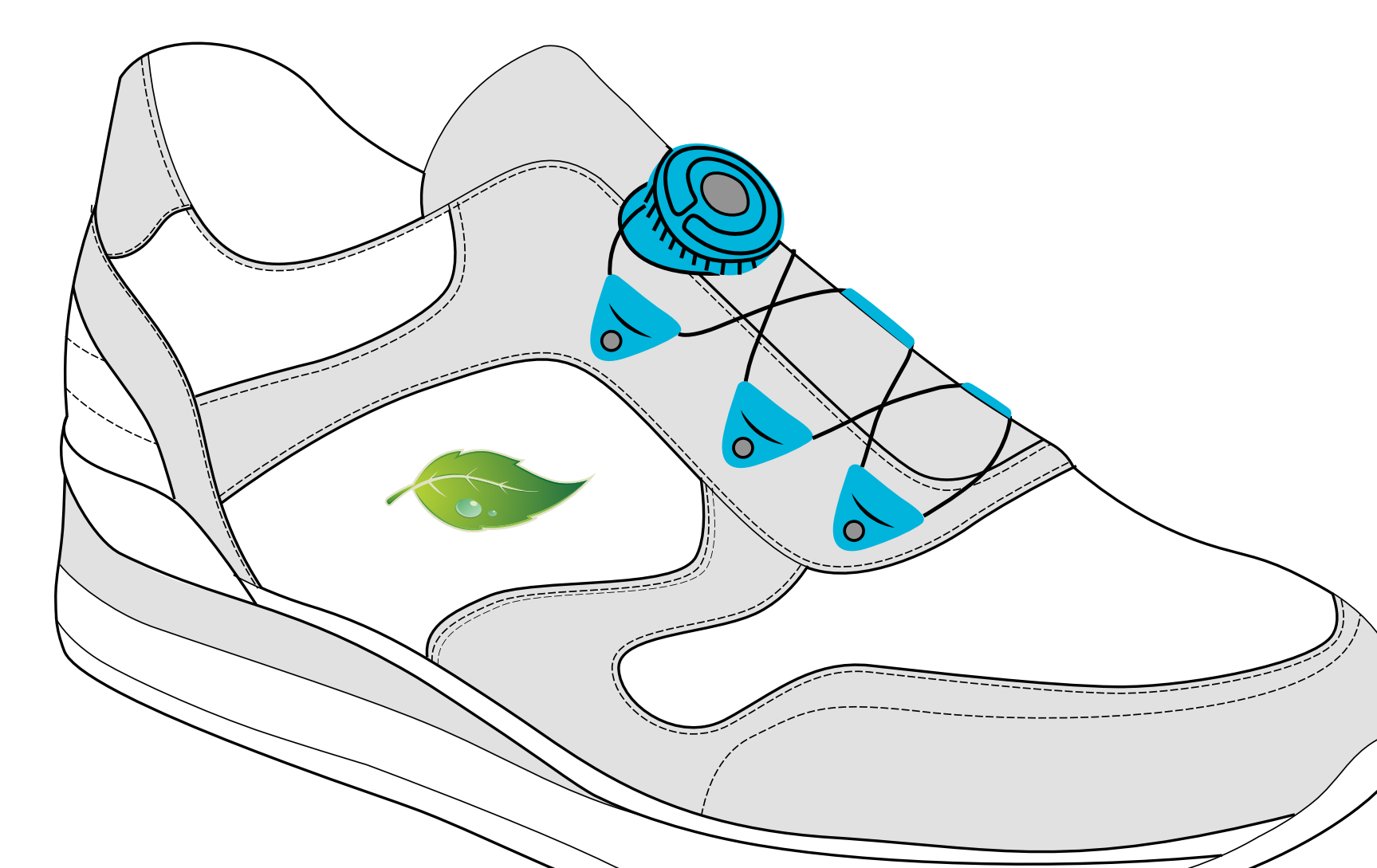
Wedge/Tilt

Used to improve the biomechanics of the foot and leg and reduce stress on the joints. Can be applied medially or laterally.



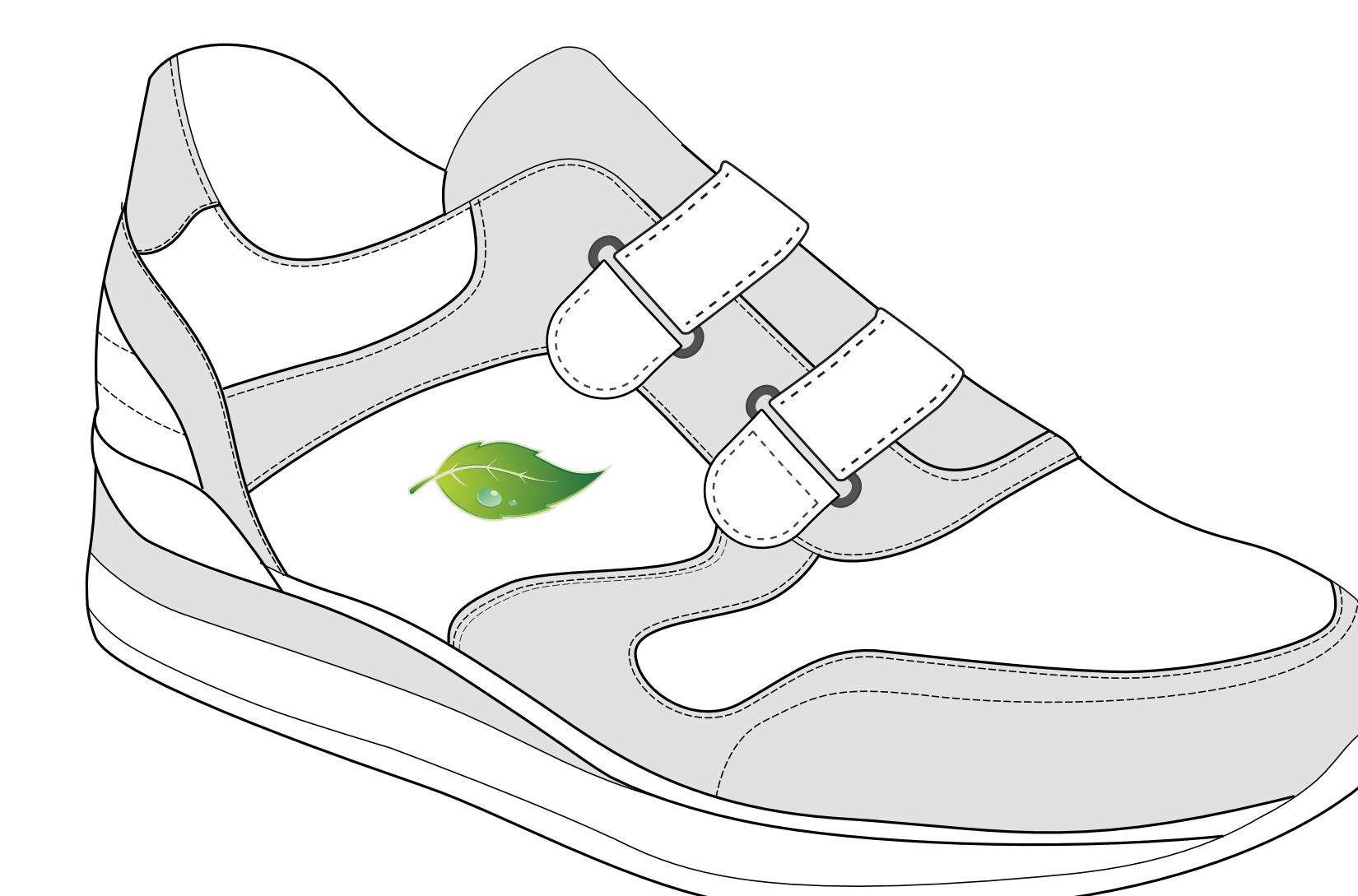
Negative rocker sole

Forefoot rocker with the heel lower than the forefoot. Transfers body weight proximally and reduces forefoot pressure. Dorsiflexion and Achilles issues must be considered.



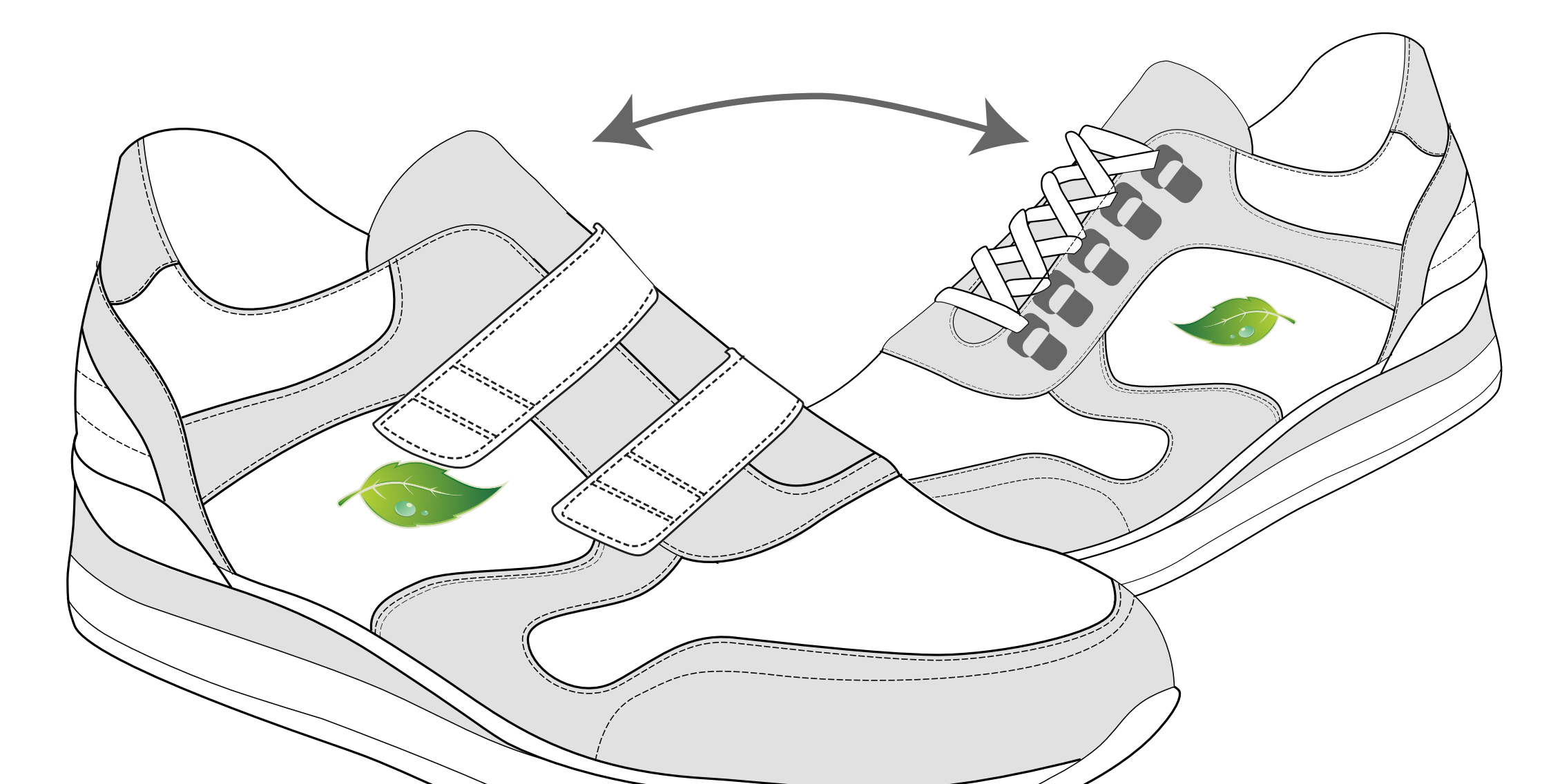
Click Medical (Boa) Closure

Patients can easily adjust to the optimal fit of their device throughout the day, quickly adapting to changes in activity or support needs.



Velcro Dee on Lateral side

Patients with hand limitations find it easier to pull the velcro strap to the medial side of the shoe



Lace to Velcro Conversion

Replace laces with Velcro straps, also can change Velcro to laces.